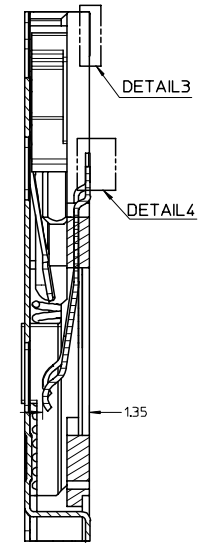
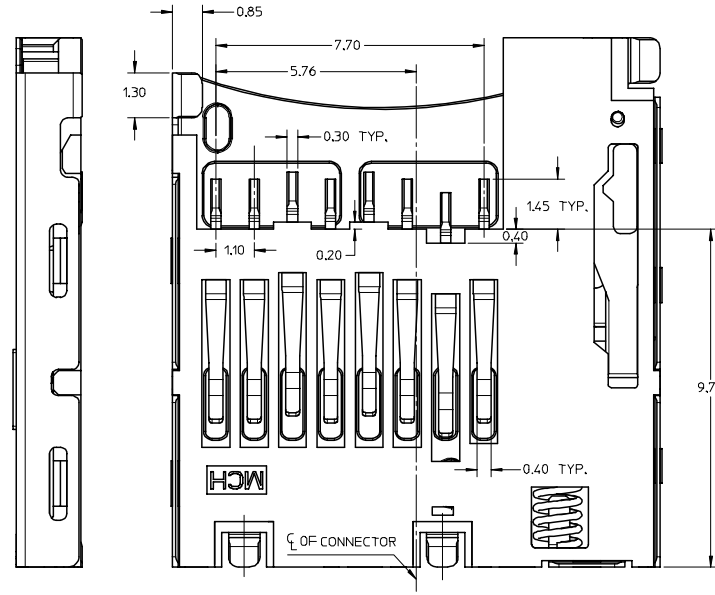
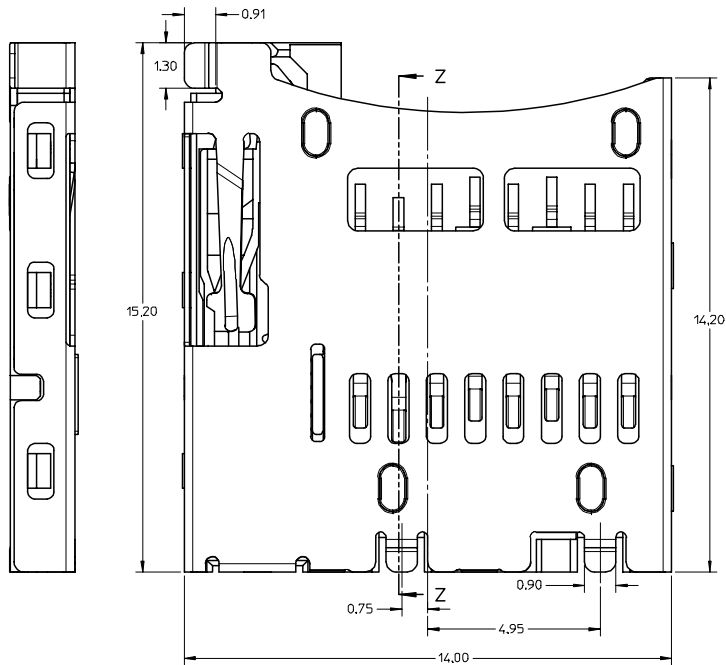
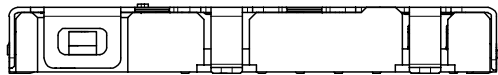


DETAIL 4

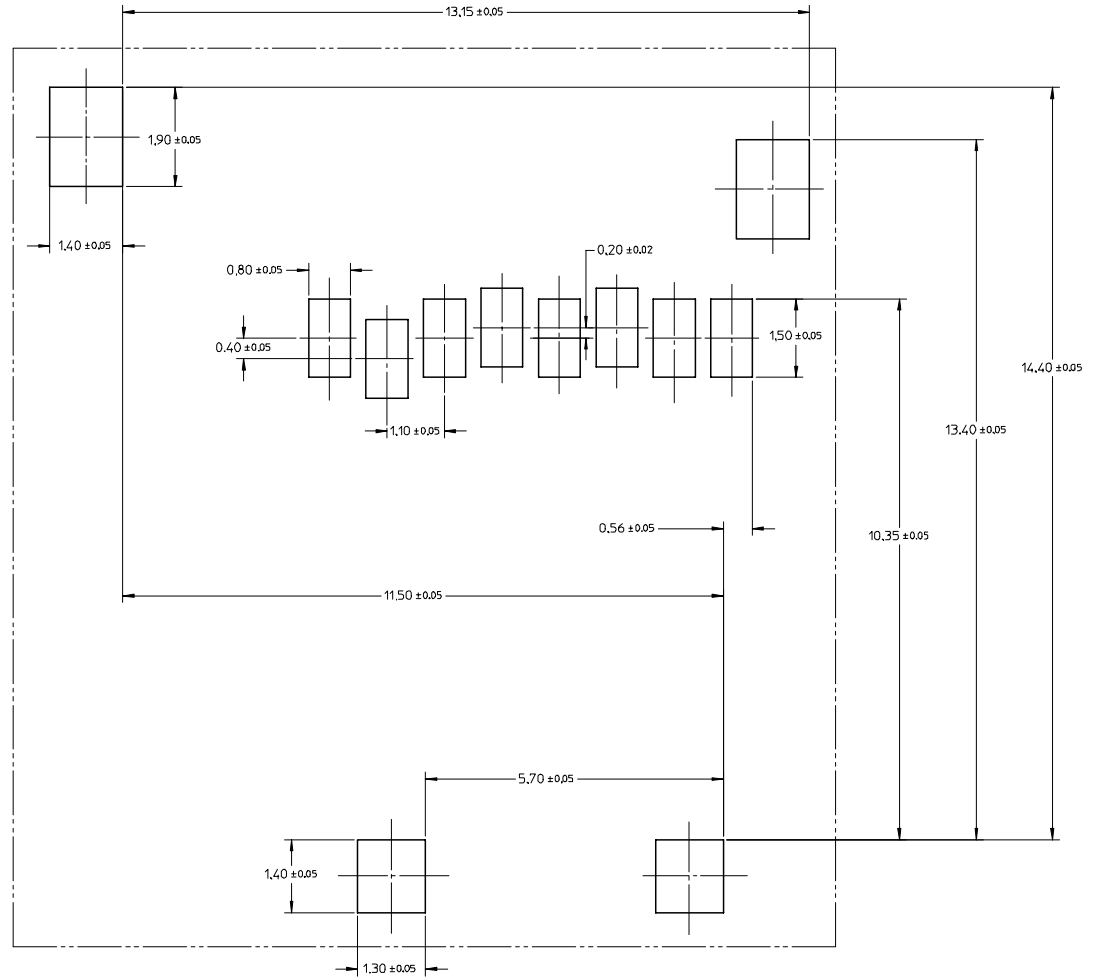
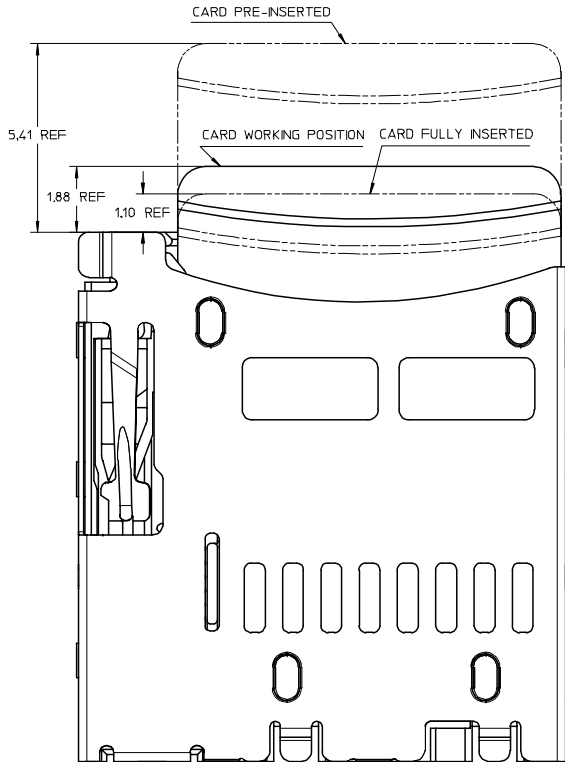
DETAIL 3



SECTION Z-Z



REVISED EEC NO. SH2007-0499 DRAWN: ZHOU 2007/02/12 CHKD: XU XIANG APPR: JINCHEN 2007/03/16 REV DESCRIPTION	QUALITY SYMBOLS	GENERAL TOLERANCES (UNLESS SPECIFIED)	DIMENSION STYLE	SCALE	DESIGN UNITS	THIRD ANGLE PROJECTION																		
	$\nabla=0$ $\nabla=0$	<table border="1"> <tr><th></th><th>mm</th><th>INCH</th></tr> <tr><td>4 PLACES</td><td>± ---</td><td>± ---</td></tr> <tr><td>3 PLACES</td><td>± ---</td><td>± ---</td></tr> <tr><td>2 PLACES</td><td>± 0.15</td><td>± ---</td></tr> <tr><td>1 PLACE</td><td>± ---</td><td>± ---</td></tr> <tr><td colspan="3">ANGULAR ±1/2°</td></tr> </table>		mm	INCH	4 PLACES	± ---	± ---	3 PLACES	± ---	± ---	2 PLACES	± 0.15	± ---	1 PLACE	± ---	± ---	ANGULAR ±1/2°			MM ONLY	5:1	METRIC	
		mm	INCH																					
	4 PLACES	± ---	± ---																					
3 PLACES	± ---	± ---																						
2 PLACES	± 0.15	± ---																						
1 PLACE	± ---	± ---																						
ANGULAR ±1/2°																								
			DRAWN BY: XIXU CHECKED BY: XIXU APPROVED BY: JNCHEN	DATE: 2006/03/25 DATE: 2006/03/28 DATE: 2006/03/29	TITLE: TFR&MICRO SD CARD READER PUSH PUSH TYPE WITHOUT DETECT SWITCH																			
		DRAFT WHERE APPLICABLE MUST REMAIN WITHIN DIMENSIONS	MATERIAL NO.: 473340001 SIZE: A2	DOCUMENT NO.: SD-47334-001	MOLEX INCORPORATED SHEET NO. 1 OF 2																			



RECOMMENDED PCB LAYOUT

NOTES:

- 1 MATERIAL:
 - 1-1 TERMINAL, FITTING NAIL : COPPER ALLOY
 - 1-2 SHELL, CAM PIN, SPRING : STAINLESS STEEL
 - 1-3 HOUSING, CAM : LCP, UL 94-V0, BLACK
- 2 FINISH:
 - 2-1 TERMINAL : NICKEL UNDERPLATED, GOLD PLATING ON CONTACT AREA
TIN PLATING ON SOLDER TAIL
 - 2-2 SHELL : GOLD FLASH OVER NICKEL UNDERPLATED ON SOLDER PAD
- 3 MECHANICAL SPECIFICATION:
 - REPEATED 5,000 TIMES MATING AND UNMATING CYCLES AND STILL MEET ELECTRICAL CHARACTERISTICS
- 4 ELECTRICAL SPECIFICATION:
 - 4-1 RATED CURRENT (PER CONTACT) : 0.5AMPS MAX AND TEMPERATURE RISE SHOULD BE 30°C MAX
 - 4-2 INSULATION RESISTANCE(IR) : 100 MEGOHMS MIN.
 - 4-3 DIELECTRIC WITHSTANDING VOLTAGE : 500 VAC
 - 4-4 CONTACT RESISTANCE: 100 MILLIOHMS MAX

REVISED EIC NO. SH2007-0499 DRWN: ZHOU 2007/02/12 CHKD: XU XIANG APPR: JINCHEN 2007/03/16 REV DESCRIPTION	QUALITY SYMBOLS	GENERAL TOLERANCES (UNLESS SPECIFIED)	DIMENSION STYLE	SCALE	DESIGN UNITS	THIRD ANGLE PROJECTION												
	$\nabla=0$ $\nabla=0$	<table border="1"> <tr><th>mm</th><th>INCH</th></tr> <tr><td>4 PLACES ± ---</td><td>± ---</td></tr> <tr><td>3 PLACES ± ---</td><td>± ---</td></tr> <tr><td>2 PLACES ± 0.15</td><td>± ---</td></tr> <tr><td>1 PLACE ± ---</td><td>± ---</td></tr> <tr><td colspan="2">ANGULAR ± 1/2°</td></tr> </table>	mm	INCH	4 PLACES ± ---	± ---	3 PLACES ± ---	± ---	2 PLACES ± 0.15	± ---	1 PLACE ± ---	± ---	ANGULAR ± 1/2°		MM ONLY	10:1	METRIC	
	mm	INCH																
	4 PLACES ± ---	± ---																
3 PLACES ± ---	± ---																	
2 PLACES ± 0.15	± ---																	
1 PLACE ± ---	± ---																	
ANGULAR ± 1/2°																		
<table border="1"> <tr><td>DRAWN BY</td><td>DATE</td></tr> <tr><td>XIXU</td><td>2006/03/25</td></tr> <tr><td>CHECKED BY</td><td>DATE</td></tr> <tr><td>XIXU</td><td>2006/03/28</td></tr> <tr><td>APPROVED BY</td><td>DATE</td></tr> <tr><td>JNCHEN</td><td>2006/03/29</td></tr> </table>	DRAWN BY	DATE	XIXU	2006/03/25	CHECKED BY	DATE	XIXU	2006/03/28	APPROVED BY	DATE	JNCHEN	2006/03/29	TITLE	TFR&MICRO SD CARD READER PUSH PUSH TYPE WITHOUT DETECT SWITCH				
DRAWN BY	DATE																	
XIXU	2006/03/25																	
CHECKED BY	DATE																	
XIXU	2006/03/28																	
APPROVED BY	DATE																	
JNCHEN	2006/03/29																	
MATERIAL NO. 473340001	DOCUMENT NO. SD-47334-001	MOLEX INCORPORATED																

DRAFT WHERE APPLICABLE MUST REMAIN WITHIN DIMENSIONS

SIZE A2

THIS DRAWING CONTAINS INFORMATION THAT IS PROPRIETARY TO MOLEX INCORPORATED AND SHOULD NOT BE USED WITHOUT WRITTEN PERMISSION

SHEET NO. 2 OF 2